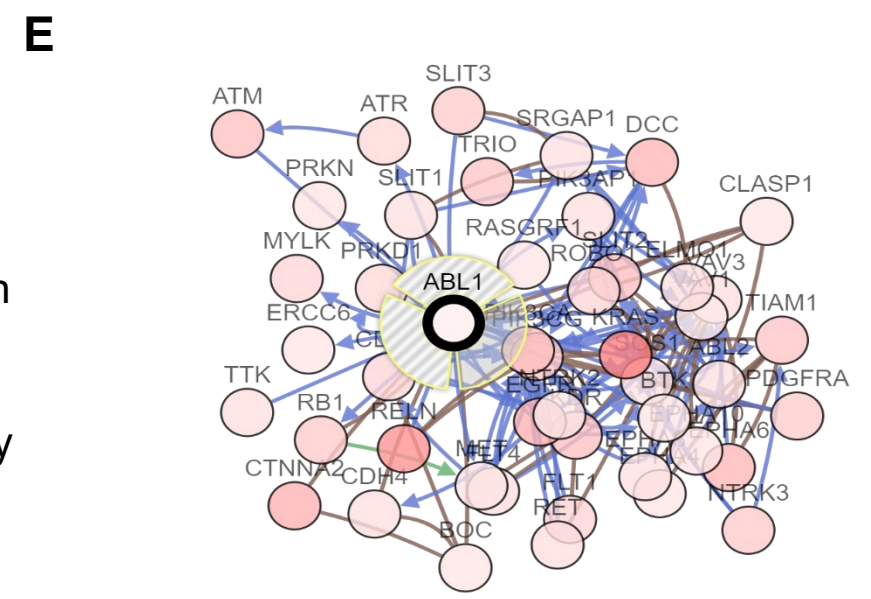
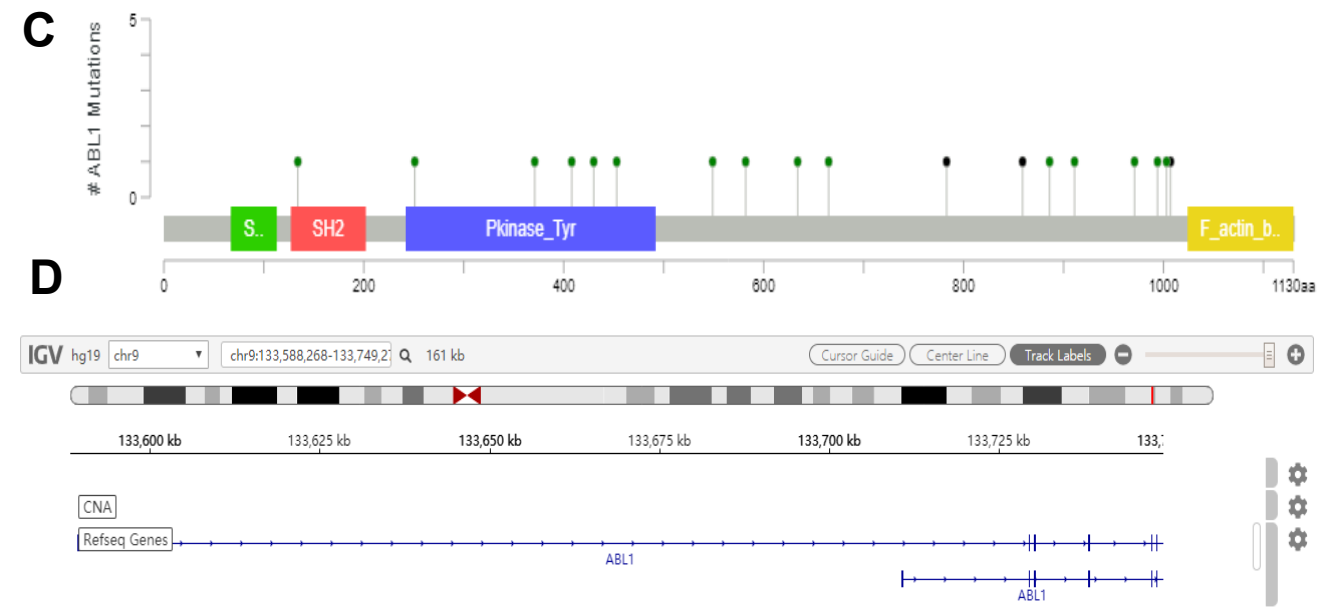
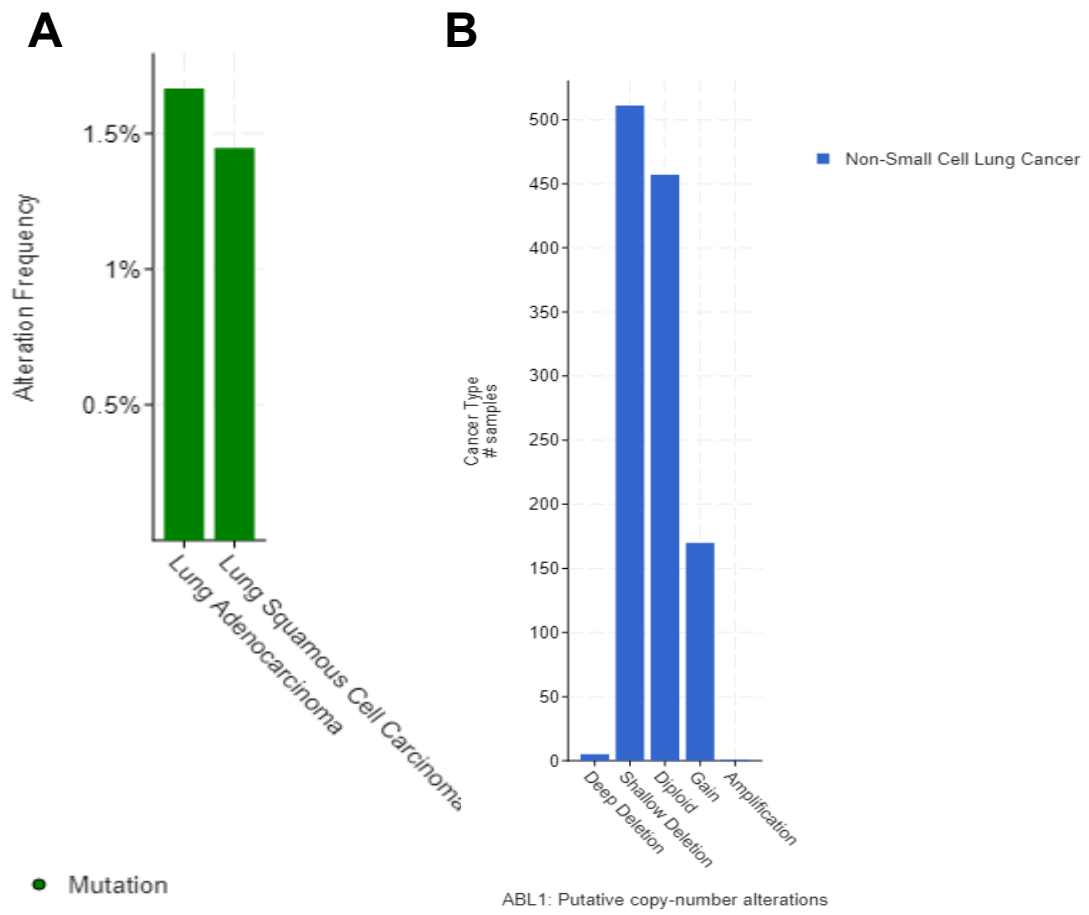


Supplementary Figure 1 : The treatment effects of STAT3 inhibitor, PD-1/PD-L1 inhibitor and STAT3 inhibitor combined with PD-1/PD-L1 inhibitor on *ABL1* transfected and knocked down PC-9 and H1975 cells.

A, B, C: PC-9 cells,

D, E, F: H1975 cells.



Supplementary Figure 2. Mutation analysis of *ABL1* gene in non-small cell lung tumor tissues by using public available data in the database of the cBioportal for Cancer Genomics (<http://www.cbioportal.org>). *ABL1* had low mutation frequency in NSCLC, LUAD and LUSC.